

NASHUA SOUP KITCHEN & SHELTER

# 25th ANNUAL GALA



Nashua Soup Kitchen  
& Shelter, Inc.



FEEDING. HOUSING.

*empowering.*



SPONSORSHIP TIERS

## DEAR FRIEND OF NSKS,

This October, the Nashua Soup Kitchen & Shelter will mark a powerful milestone: our 25th Raising Hope Gala. For a quarter-century, this event has brought people together to support our most vulnerable neighbors—and this year, more than ever, we need you with us. Why now? Because the need in our community has never been greater. Families who were just getting by are now finding themselves without stable housing. Children are going to bed hungry in homes where food has run out. And across the country, food pantries like ours are facing steep declines in federal support and food donations—even as demand climbs higher every day.

### NSKS is doing everything we can to meet the growing need:



Serving hundreds of individuals and families each week through our 2 Quincy Street food pantry



Offering hot meals twice a day, fresh fruits and vegetables, and food boxes to neighbors who have nowhere else to turn



Operating our Spring Street emergency shelter and transitional housing to give people a safe place to sleep—and a path forward



Providing backpacks and reaching the students who need us most through our Meals for Kids program

But we can't do this alone. We need partners who believe that every person deserves a meal, a warm bed, and the chance to rebuild.

By sponsoring this year's Gala you are helping us raise critical funds to keep food on the shelves and beds available year-round.

### There are many ways to get involved:

- Sponsor the Gala and be recognized as a champion for hope in Nashua
- Attend the event and show your support for our mission
- Donate items to our live and silent auctions to help us maximize impact

Your support is not just appreciated—it is essential. Join us in celebrating 25 years of Raising Hope and help us take a bold step forward toward a community where no one goes hungry, and no one is left without a safe place to sleep.

With gratitude,

*Jane Goodman*

Executive Director, Nashua Soup Kitchen & Shelter, Inc.



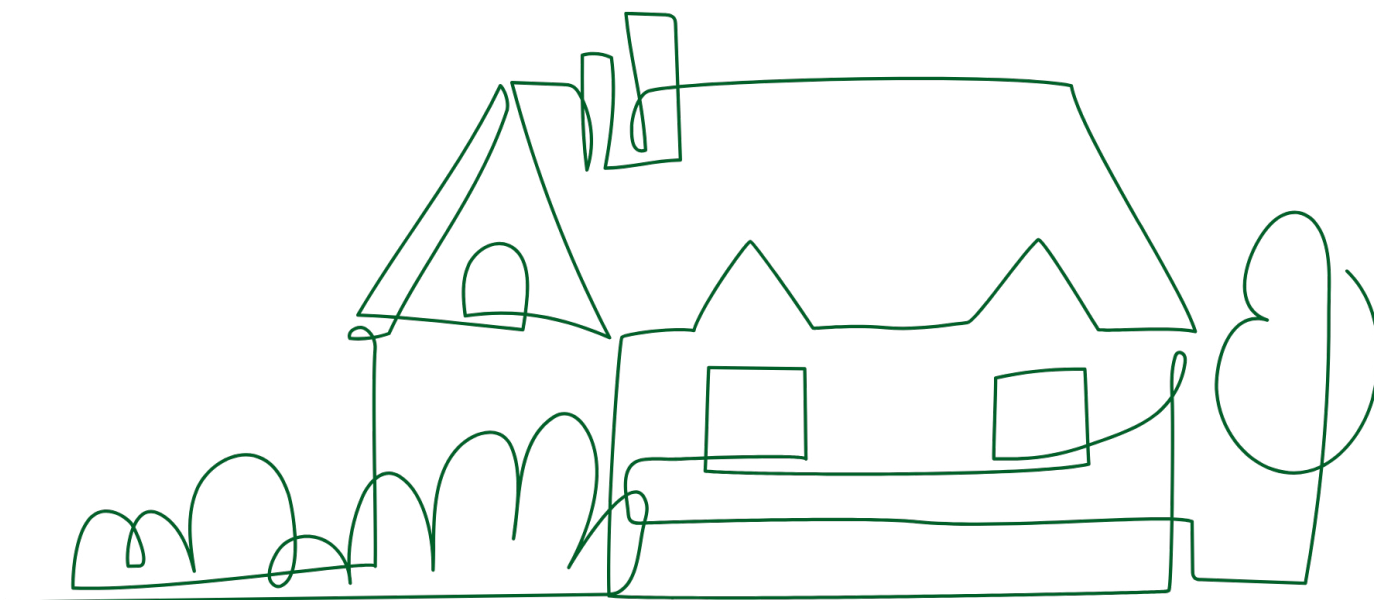
**Nashua Soup Kitchen  
& Shelter, Inc.**

# PRESENTING SPONSOR

Your Hearth & Home sponsorship helps provide nourishing meals, safe shelter, and critical support services like job readiness and housing assistance—tools that help families rebuild their lives and break the cycle of homelessness. This premier investment offers direct, lasting impact for our neighbors in need and visible leadership in our community's response to crisis.

## HEARTH AND HOME | \$25,000

- Presenting Sponsor
- Premium Logo on Event Signage
- Dedicated Recognition in Slide Presentation
- Primary Logo on Event Website
- Logo featured in all "Know Before You Go" emails
- Featured in 3 Newsletters
- Logo included in Facebook Banner for Event Promotion
- 10 Gala Tickets
- Premiere Wine at Table



## SEEDS OF CHANGE | \$15,000

- Logo on Event Signage
- Dedicated Recognition in Slide Presentation
- Featured Logo on Event Website
- Inclusion in 2 "Know Before You Go" Emails
- Featured in 2 Newsletters
- Special Social Media Recognition
- 10 Gala Tickets
- Premiere Wine at Table



## EMPOWERMENT CIRCLE | \$10,000

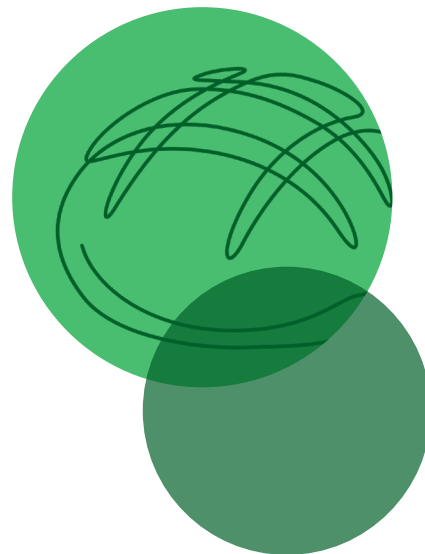
- Logo on Event Signage
- Dedicated Recognition in Slide Presentation
- Featured Logo on Event Website
- Inclusion in 1 "Know Before You Go" Email
- Featured in 1 Newsletter
- Special Social Media Recognition
- 10 Gala Tickets
- Premiere Wine at Table



## PATHWAY TO INDEPENDENCE | \$7,500

*Limited to 2 sponsors*

- Logo in Event Slide Presentation
- Featured Logo on Event Website
- Acknowledgment in Newsletter
- Special Social Media Recognition
- Choose One Themed Feature: Cocktail Hour or Menu
- 8 Gala Tickets



## NOURISHMENT ADVOCATE | \$5,000

*Limited to 4 sponsors*

- Logo in Event Slide Presentation
- Acknowledgment in Newsletter
- Special Social Media Recognition
- Choose One Themed Feature: Bidder Number, Welcome Drink, Centerpiece, or Mission Moment
- 6 Gala Tickets



## HELPING HANDS | \$2,500

- Logo in Event Slide Presentation
- Acknowledgment in Newsletter
- Social Media Recognition
- 2 Gala Tickets

## TABLE OF HOPE | \$1,750

- Logo Inclusion on Table Signage
- Social Media Recognition
- 10 Gala Tickets

## NEIGHBORLY GIVING | \$1,500

*Give in lieu of attending*

- 0 Tickets
- Social Media Recognition
- Supports a Table for Community Members or Volunteers



## JOIN US IN TRANSFORMING LIVES.

*Every day, our neighbors face impossible choices—food or rent, shelter or safety, hope or despair.*

At Nashua Soup Kitchen and Shelter, we believe no one should face these choices alone. Your sponsorship doesn't just support an event—it provides immediate relief and long-term solutions that break the cycle of homelessness and hunger in our community.

*The need is urgent. The impact is immediate. The change is lasting.*



# READY TO MAKE A DIFFERENCE?

Contact us today to secure your sponsorship and join us in creating a community where everyone has the opportunity to thrive.

- ☐ Yes, I would like to sponsor the Nashua Soup Kitchen & Shelter
- ☐ Sadly, I am unable to sponsor. I would like to make a donation in the amount of \_\_\_\_\_

## 25<sup>TH</sup> ANNUAL GALA SPONSORSHIP LEVELS

- ☐ Hearth and Home Sponsor | \$25,000
- ☐ Seeds of Change Sponsor | \$15,000
- ☐ Empowerment Circle Sponsor | \$10,000
- ☐ Pathway to Independence Sponsor | \$7,500
- ☐ Nourishment Advocate Sponsor | \$5,000
- ☐ Helping Hands Sponsor | \$2,500
- ☐ Table of Hope Sponsor | \$1,750
- ☐ Neighborly Giving Sponsor | \$1,500

Company Name: \_\_\_\_\_

Contact Person : \_\_\_\_\_ Title : \_\_\_\_\_

Mailing Address: \_\_\_\_\_

City, State, ZIP: \_\_\_\_\_

Phone Number: \_\_\_\_\_ Email: \_\_\_\_\_

- ☐ Enclosed is our sponsor check (made payable to "Nashua Soup Kitchen & Shelter")

### Contact

Carol Weeks, Director of Community Relations  
Nashua Soup Kitchen & Shelter, Inc.  
2 Quincy Street, PO Box 3116, Nashua, NH  
03061-3116  
E-mail: carol@nskks.org  
Website: www.nskks.org

Please submit your sponsorship form  
no later than **October 4, 2025.**

**Return completed form to:**  
PO BOX 3116, Nashua, NH 03061-3116